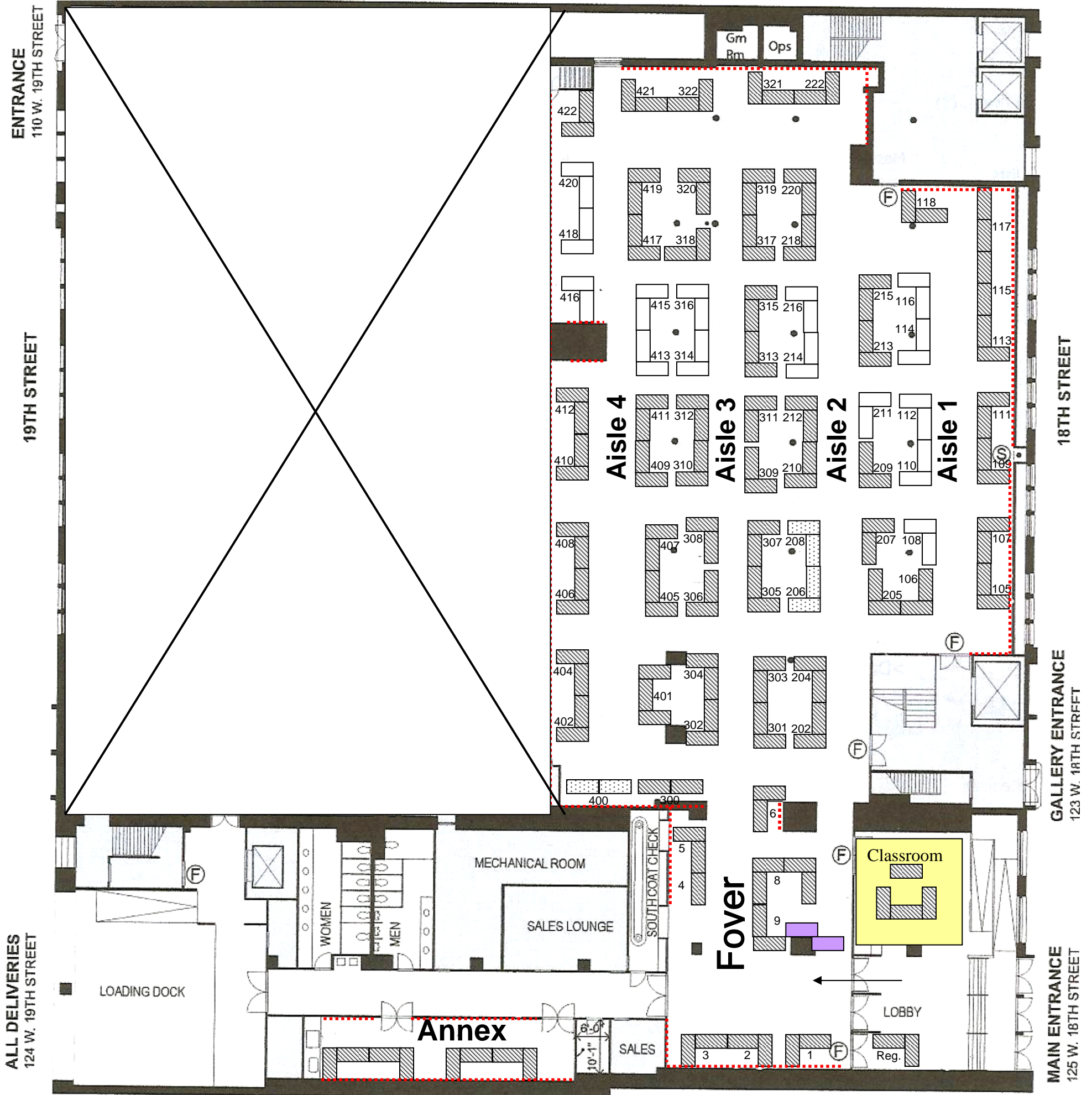


New York Spring 2011



Note to Returning Merchants:
We will start assigning space to new merchants on 3/22/09.

Updated August 16, 2010

***Subject to Change**

- Available
- Unavailable
- Pending

Red dashed lines denote where 7 foot racks and other major obstructions are allowed. Nowhere else is allowed to obstruct their neighbor's booth, subject to approval from on-site coordinator.