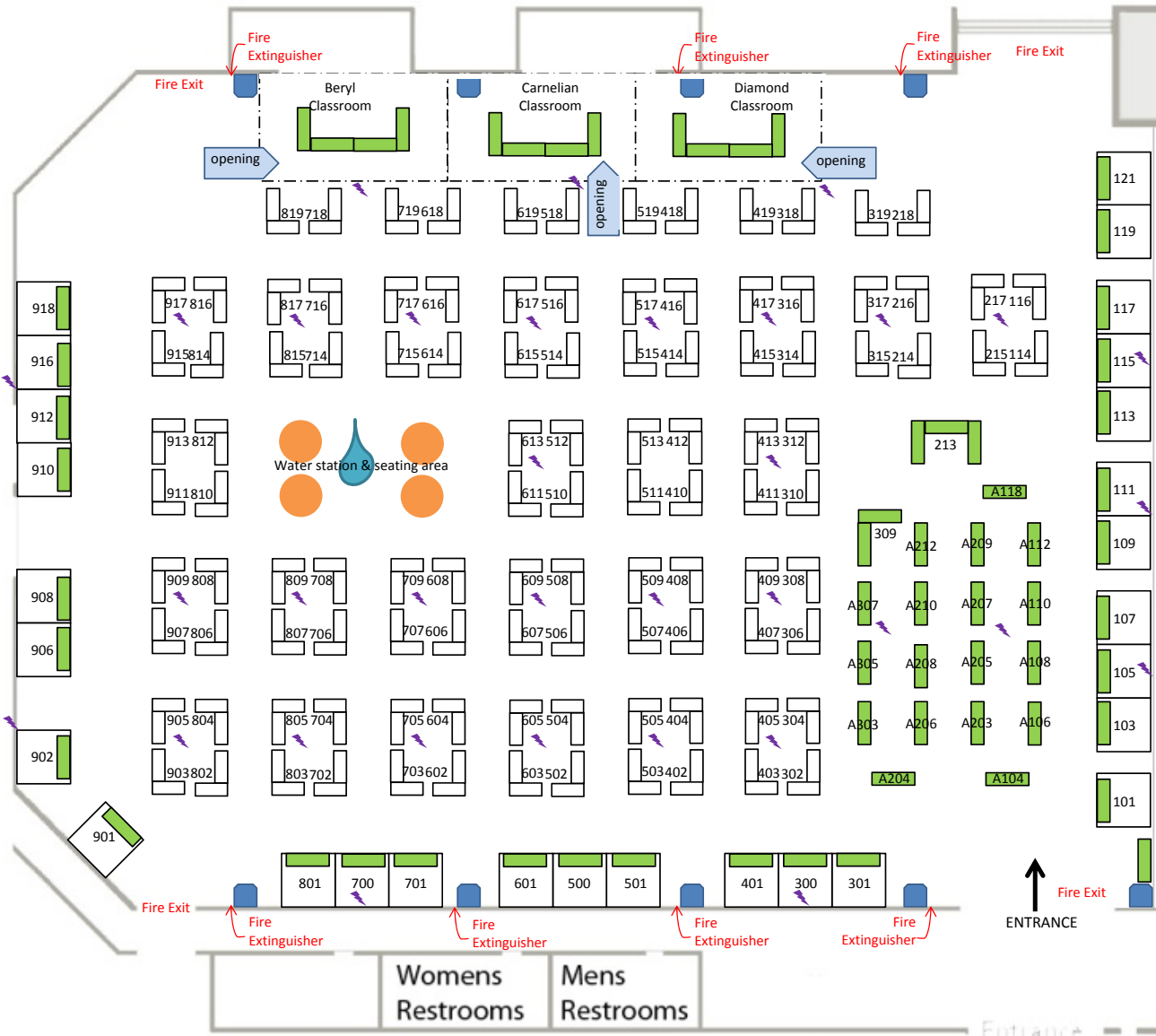




THE WHOLE BEAD SHOW Oakland 2018

November 9-11
Friday & Saturday 10am-6pm,
Sunday 11am-5pm

Marriott Oakland City Center
West Ballroom
1001 Broadway



Merchants

- African Fashion & Gifts - 517
- Aloha Gems USA - 802 + 804
- Aloha Pearls, Inc. - 703 + 705
- Anil Kumar - 310 + 312
- Artrade - 501
- Ava Motherwell
Collection - 302, 304, 403, 405
- Barbara Becker Simon - A207 *Artisan*ⁿ
- Bay Area Bead Collector - A305
- Bead Artistry - 410
- Bead Bistro Crafts - 406 + 408
- Beadalon - Ava Motherwell Collection
Authorized Beadalon Distributor - 704
- Beads & Crafts Inc. - 418 + 519
- Beads & Etc. - 417
- Beads on Main - 507 + 509
- Best Beads - 315 + 317
- Best in Bead Company
LLC - 806, 808, 907, 909
- Billy's a Bad Kitty - A205 *Artisan*ⁿ
- Blue Door Beads - 213
- Blue Heron Bead
Company - 306, 308, 407, 409
- Bollywood Bead
Company - 506, 508, 607, 609
- Bonita Creations - 910, 912, 916
- Classactdesigns - 316
- Cottage Jewel Antiques - 511
- Crazy2Wear Designs - A106 *Artisan*ⁿ
- Earth Neighborhood - 707
- Ellie Mac - A112 *Artisan*ⁿ
- Everything Tibetan - 101
- FabMo, Inc. - 412 + 513
- Finestones - 411
- Forever Silvers - 518, 618, 619, 719
- Gail Crosman Moore - A204 *Artisan*ⁿ
- Garden of Beadin' - 113, 115, 117
- Gary B. Wilson - 502, 504, 603, 605
- Gemini Gems - 318 + 419
- Gemstone & Co Ltd - 413
- German Metal - 302, 304, 403, 405
- Global Marketplace - 309
- Grace Lampwork Beads - 801
- Green Girl Studios - 702 + 704 *Artisan*ⁿ
- Hands of the Hills, Inc - 906 + 908
- Harper Designs - A208 *Artisan*ⁿ
- J. M. Imports - 602 + 604
- Janu Gems - 803 + 805
- Jaret's Old & Interesting
Beads - 614, 616, 715, 717

- Jennifer Gems
- 514, 516, 615, 617, 714, 716, 815, 817
- Jess Imports - 702 + 704
- Jesse James Beads - 402
- Jewel Pledge - 114, 116, 215, 217
- JP Pearl & Jewelry Inc. - 300 + 301
- Just Bead It - 611
- Kilim Company - 902
- Kim Van Antwerp Art Jewelry - A303 *Artisan*ⁿ
- Klews Gallery - A206 *Artisan*ⁿ
- Knopfen Strasse - 302, 304, 403, 405
- Lauratas Inc. - 918
- Love Harmony Inc - 415
- M. S. International - 512
- Made in the Motherland - 414
- The Mandrel - A118 *Artisan*ⁿ
- Marion Hamilton - 214 + 216
- Marion Jewels in Fiber - 218 + 319
- Mega Inc - 103, 105, 107
- The Modern
Antiquarian - 814, 816, 915, 917
- Mountain Robbins - 401 *Artisan*ⁿ
- Natural Touch - 314
- Nightside Studios - A203 *Artisan*ⁿ
- Old Man Beads - 302, 304, 403, 405
- Pacific Silverworks - 601B + 701
- Perfect Pearl - 411
- Permelia's Beads - 302, 304, 403, 405
- Prima Donna Beads - A118 *Artisan*ⁿ
- Primitive Earth Beads - 315 + 317
- Savannah - 601B + 701
- Shivam Imports - 503 + 505
- Soft Flex Company - 606, 608, 709
- Sophisticated Beads - A106 *Artisan*ⁿ
- Southern Sky - 901
- TA Pearls - 903 + 905
- Tangible Light Studio - A307 *Artisan*ⁿ
- Tilden Stone & Glassworks - A108 *Artisan*ⁿ
- Trans-Pacific USA - 718 + 819
- Tropic Options - 121
- Wildcard Beads - 500 + 601B
- Wild Things Beads - 109 + 111
- Yayin Glassworks - 302, 304, 403, 405

SHOW OFFICE - 302

Put your name on the mailing list if you haven't already.
We have an email mailing list as well.
Find us on Facebook, Twitter, Instagram

www.WholeBead.com
(530) 265-2725 msg/text